



Welcome to / Croeso i Fferm Llwynifan Farm Llangennech,



Hywel and Cathrin wish to extend a warm and friendly welcome to you, we hope you have an enjoyable holiday.

This Welcome pack will give you an overview of the park, along with any changes taking place during the Covid-19 pandemic.

We have a broad selection of brochures, maps and general information in our information point that covers the various attractions in the area.

If you have any queries, please do not hesitate to call Hywel or Cathrin. 01554 820420 or 07737 822288

- Your power supply is 10amp.
- Serviced pitches are supplied with drinking water and grey wastewater disposal. Please note our water pressure at times can be quite low, and we are on a meter, **PLEASE DO NOT WASTE WATER, IF ANY OF YOUR CONNECTIONS LEAK, PLEASE TURN THE MAIN TAP OFF WHEN YOU ARE NOT HERE, OR AFTER YOUR WATER TANK IS FULL.**
- A water tap is available at the far end of the standard pitch field, and to the right of the shower room door.
- **Where possible please use the facilities in your own van.** Our shower block, toilets, a tumble dryer / washing machine and dish washing facilities are in the terracotta-coloured building. Please leave these facilities as you would wish to find them.
- Please note, the showers get busy between 8am – 10am and 6pm -8pm. During busy times please limit shower use to 5min or less.
- Chemical disposal / Grey Wastewater emptying area is to the left of the gents toilet room door.
- Please be aware that we have an electric fence on top of the posts going around the field to prevent the cows from leaning over.
- Bins are behind the wall (In front of you as you walk out of the gents toilet room door)
- Camper van service point is at the end of the standard pitches area, lift the manhole cover to empty the grey waste.
- Departure time is 12pm.





Contact Details

6:00pm to 9:30am Hywel Davies (The old Cow shed, next to the farmhouse) 01554 820420 / 01554 820333 Option 2. Or mobile 07737 822288

9:30am to 6:00pm Cathrin Jones (Main Farm house) 01554 820420 or 01554 820333

Email – info@southwalescaravanpark.com

If there is anything not up to standard please let us know during your stay and before you leave, we will do whatever we can to rectify the issue.



Hand sanitisers & Social distancing.



We have placed several hand sanitisers around the park, please use these. They are located at

- The chemical emptying point.
- Water taps.
- Bin area.
- Information point.
- Dog field entrance.
- Please for the comfort of other guest at the park ensure you always keep a 2-meter distance.

• What you can do?

- Please stop and think
- If you develop symptoms while on the park, please pack up and go home. As soon as possible also please call us to we can deep clean the pitch bollard etc.
- Follow the NHS guidance on hand washing and the use of an alcohol-based sanitiser.
- Maintain good hygiene practices such as using tissues when coughing or sneezing and disposing of the tissue in a bin.
- Check the government website for advice on the risk level, information about the virus and returning from travel abroad.



Additional services available, these are...

Laundry.

Our washing machine is £3 for a wash, and tumble dryer £2 for 35min drying (To dry our hand towels usually costs £4) See instructions on the machines.

Car hire



We use Enterprise car hire for our car fleet. You can book direct by calling the Llanelli Branch on 01554 752441. OR let Hywel know. Where possible

Enterprise will come collect you from the park, take you to their offices just down the road from us to complete the paperwork. When you are leaving simply leave the car on our yard, they will come and collect it. Unit 6, Dafen Trade Park, Llanelli, GB, SA14 8NA

Dog sitting service.



There are several attractions that unfortunately do not allow pets to visit. We however want you to enjoy all the attractions in the area, without having to worry about your best four-legged friend. We have teamed up with a local company, who will offer a dog/cat sitting service.

They are fully insured, and pet first aid trained! For further details please contact Stella <https://www.facebook.com/daisyshome.boarding> Tel 07974 773956

Cycle Hire



We have many cycle paths locally, from the millennium coastal park through to a Sustrans route no 4.

There are two bike hire companies locally.

1) Towy Valley Cycles – Located in the National Botanic Garden of Wales – Tel 0757 6431960 E-mail Paulrobertsmith@yahoo.co.uk

2) The bike Hub 01792 466944, swanseabikeshop@gmail.com

Both can hire bikes for the duration of your stay. Call them for further information.



Useful information

News Papers - We currently do not sell newspapers, however these can be found in the village co-op 18 Afon Road, Llangennech SA14 8TS · 0.8miles – 3min by car.

LOCAL PUB / RESTAURANT

The Bridge.

www.thebridgellangennech.com

Bridge Street

Llangennech

SA14 8TW

01554 821301



LOCAL BISTRO PUB / RESTAURANT

Tafarn Morlais

www.tafarnmorlais.co.uk

1 Pontarddulais Road

Llangennech

SA14 8YE

01554 820121



FISH AND CHIP SHOP. In our opinion the best fish and chips in the area is in Llangennech

60A Bridge Street (1.13 km)

SA14 8TN Swansea, United Kingdom

01554 824095

Www.llanchippy.co.uk

TAXI – Our local taxi company is D M Cabs tel 01554 820652

Trish Taxis 01554 777333 or 07794008046

or Eddies Cab tel 01554 777222



VETS

Llanelli Surgery, 1 James Street, Llanelli, SA15 1DU Tel 01554 772097

Appointments only - Monday - Friday: 8.30 – 6.30pm & Saturday: 09.00 – 11.00am

Nearest Emergency Vet with all night cover, is St James Vet, Parkway Sketty Swansea.

Out of hours tel 01792 200900 Daytime 01792 205000

CASH POINT & LOCAL GROCERY SHOP - is in the Co-Op Llangennech 18 Afon Road, Llangennech SA14 8TS · 0.8miles – 3min by car



DENTIST

Contact NHS dial 111. They can give you details of the dental services available for you in our area.

DOCTOR

Llangennech surgery
Park Lane, Llangennech, Llanelli , SA14 8TU
0.2 miles Tel: 01554 820287

HOSPITAL - Prince Phillip in Llanelli 2miles

Go towards Llanelli, turn right at the fourth roundabout, the hospital is on the left in approximately $\frac{3}{4}$ of a mile. Post code SA14 8QF



PLACES OF WORSHIP - There are many places of worship locally, please come and see us, for times of services, and locations.

PUBLIC TRANSPORT There are two bus stops nearby, the first one is the Allt / Llwynifan Bus no 175, the other stop is in the Village – Llangennech co-op Bus stop.

For up to date time tables visit our website
<https://southwalescaravansite.co.uk/public-transport/>



LEISURE CENTRE. - The Nearest Leisure Centre is in Llanelli, Park Crescent, SA15 3AE · 01554 774757

GYMNASIUM - is Robert Davies health and Fitness. 2.3miles. SA14 8QE
www.rdhealthandfitness.com 01554 754222.

CHEMIST - Gravells in Llangennech village

Gravells Pharmacy Ltd
60a, Bridge St, Llangennech, Llanelli , SA14 8TN Tel: 01554 820268

BEACH location is in Llanelli – SA15 2LF (Motorhome friendly car park)



LARGE SHOPPING CENTRE - is Parc Trostre SA14 9UY or Parc Pemberton

Post code is SA14 9UZ

Morrisons - Pemberton Retail Park, Llanelli SA14 9DR.

Tesco - Parc Trostre, Llanelli SA14 9UY

These are all three miles towards Llanelli.



Post office -_3 Maescanner Road Dafen Post Office, Llanelli SA14 8LR - Tel 0345 611 2970

Recycling / Waste - PLEASE Recycle.

Our green bins can take Plastic, clean tin cans and cardboard.

(PLEASE NO GLASS BOTTLES IN THE GREEN BINS)

We have a bin for glass bottles.

The crate is for the Glass milk bottles only.

The Yellow bin is for dog waste.

Veolia bin is for general waste only.



LPG Station Quantum Prospecting Ltd, Petroleum & Fuel Manufacturer
Unit 20, Swansea SA7 9LA (01792) 701818 (If you find a closer supplier please let us know)

FREE WI-FI

FREE Wi-Fi throughout the park.

*Click on the wifi logo on your device.

*Look for the "Llwynifan Farm wifi"

*Click connect, and type in the password (the password will be on the letter in your welcome bag)

*Then open a web page, you should see our wifi landing page, complete details as requested. (Email address etc)

*Agree to the T&Cs and connect.



IN CASE OF FIRE

1. Raise the alarm, the fire extinguisher boxes are fitted with alarms. Just open the door. We have extinguishers by the Motorhome emptying point, and behind pitches 24/25 on the road side, others can be found in the shower room.
2. DIAL 999 The address is, Llwynifan Farm, Llangennech, Llanelli, SA14 8AX
OR use grid reference SN 55424 02657
3. If safe to do so tackle fire with the extinguishers provided

*A bit of friendly advice....
Please unwind your electric cable completely or the heat can build up & potentially cause a fire.*





LOCAL HAMPERS



We have teamed up with “Dragon fine foods” and “Carmarthen Food” who bring local food producers together, and create the ability to order superb quality Welsh food on line.

To order a hamper go to our website. It’s a drop-down option under park facilities and map tab.

<https://southwalescaravansite.co.uk/facilities/welsh-produce-pack/>

Fishmonger.

Our fishmonger usually calls round every Thursday, he also sells eggs, bacon and Felinfoel Fagots. – Hywel will call round or send a text message and let you know when he is on the yard.

Saturday Food delivery



Every Saturday morning, we have G W Watkins & Son mobile shop calls up the farm, (Usually around 9.30am) We will send you a text message when they are here, he will drive round the park, keep an eye out and stop him as he drives round. They sell fruit and vegetables, Fresh meats, locally made cakes, eggs and much much more!



- Please note. These are external companies. We rely on them to deliver these items to us.



Our history

Miriam, Glan and Hywel moved here on the 14th of June 1976 from a new modern house (A house with all the “modern” luxuries such as gas central heating!) to Llwynifan Farm, which needed a lot of work to modernise.

Glan also had a job, and worked as an ambulance man, so the work he did was during “Holidays” and weekends.

In 1985 mum and dad decided to have a CL with the caravan club, and so our park was opened. The standard pitches are the original 5 van site.

Over the years the park developed, and Seasonal pitches were added, along with a basic toilet block and shower facilities.

Mum and Dad worked hard in developing the farm to what it is today.

Dad passed away in 2012 and Hywel and Cathrin took over (Brother and sister) the following year we added the serviced pitches and upgraded the toilet block.

Feedback from last year

2020 Was a tough year for everyone, however during the lockdowns we improved our Chemical emptying point, created a dog shower, improved the ventilation in our showers and toilets, installed an electric car charging point, installed solar panel systems on our shed roof and changed the roof of the shower and toilet block!

It has been suggested we upgrade our electricity to 10amp, however the current costs of having three phase power to the site is £35K and the further upgrade of the bollards a further £10k. So for the time being we will stick with the 10amp power supply.

If there is anything else you think we should do that would improve the park, then please do let us know. We are open to suggestions!

Park maintenance

Grass cutting – We cut the grass/ rake the pitches before each new guest arrives, this does however mean that the grass is cut daily, we aim to do this between 10am – 2pm.

Wasps and Ants - If you find a wasps nest or ants nest, please inform Hywel or Cathrin.

Toilet and Shower block – We regularly clean and use a fogging machine in our facilities. Please see the opening times inside the facility. If any of the facilities are not up to a clean standard, please call us.

Environmental – <https://southwalescaravansite.co.uk/environmental/>

We are constantly looking at ways to become more environmentally friendly.



Please recycle as much as possible, using the green bins for Paper, Plastic, Cardboard and Tin



WALKER AND CYCLIST FRIENDLY



WALKING

Trosersch woodland walk is situated about a mile north of the Allt roundabout at Llangennech.

Effectively there are 4 routes into the woods, although only the northernmost has a designated car-park. The southernmost is linked to a footpath along the Morlais river from the electricity sub-station at the bottom of Trosersch road by the Allt roundabout. There is ample parking here on the roadside. This track will eventually split giving you a choice of entering the wood along the northern or southern bank of the Morlais, or even giving a circular route, if you wish.

You can also enter along a green lane that lies beside the entrance to Trosersch Farm.



Please take great care out in the hills and mountains of Wales this week. The mild winter is prematurely hatching the eggs of the Welsh dragon (Y Ddraig Goch). If you come across a baby dragon just leave it be. DO NOT TAKE IT HOME! Dragons do not make good pets, they very quickly get too hot to handle!

For further information visit their website www.troserschwoods.co.uk/ or come see Hywel Cathrin – we have maps you can borrow.

For additional walks in Carmarthenshire visit our website page <https://southwalescaravansite.co.uk/walking/>



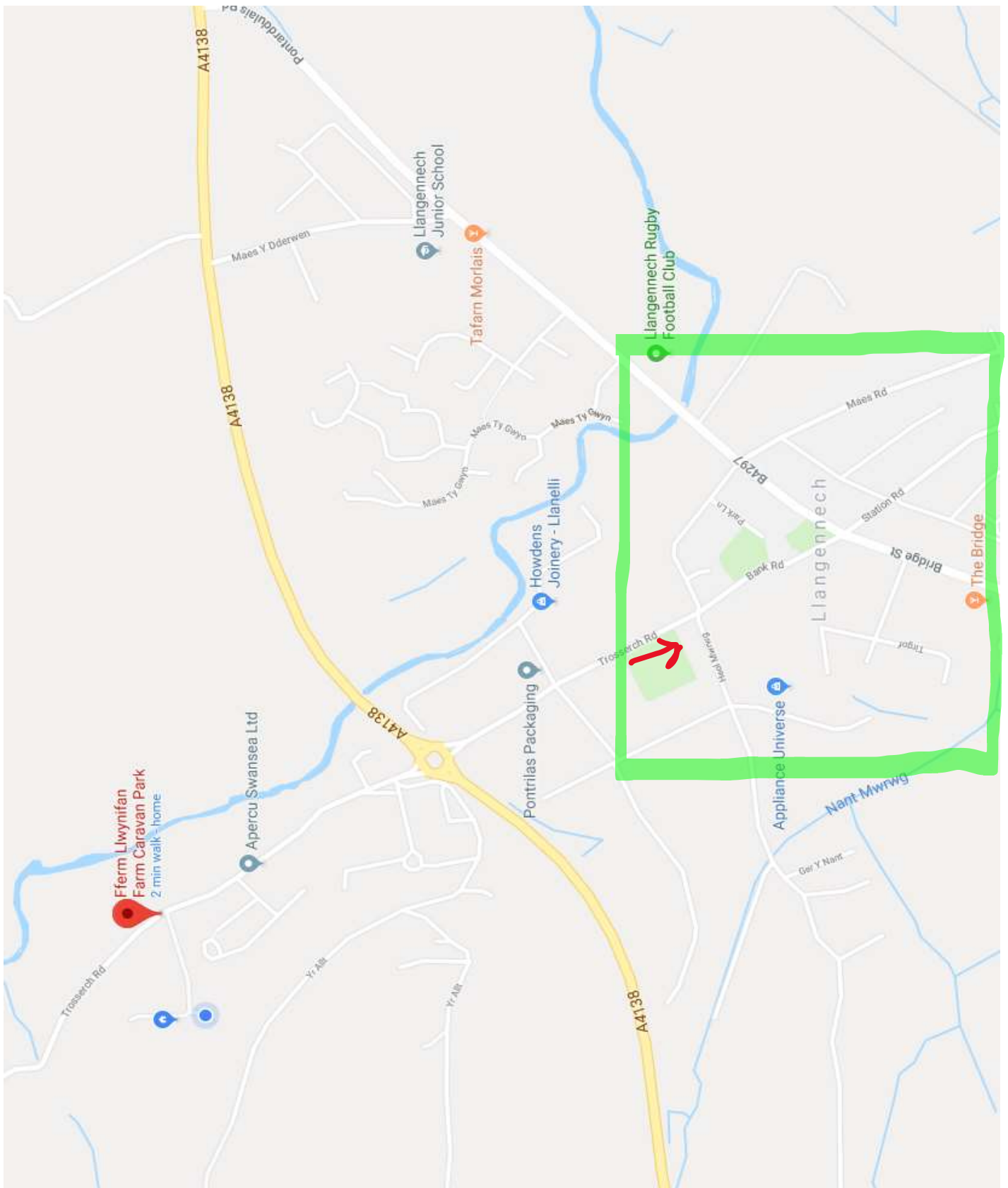
CYCLING

For cycling routes visit our website page <https://southwalescaravansite.co.uk/cycling/>

Here you will find a map, click on the Google map and all the black lines represent cycling paths in the area. One of these starts from the roundabout of the A4138 at the bottom of our drive. For further details come and see Hywel or Cathrin.

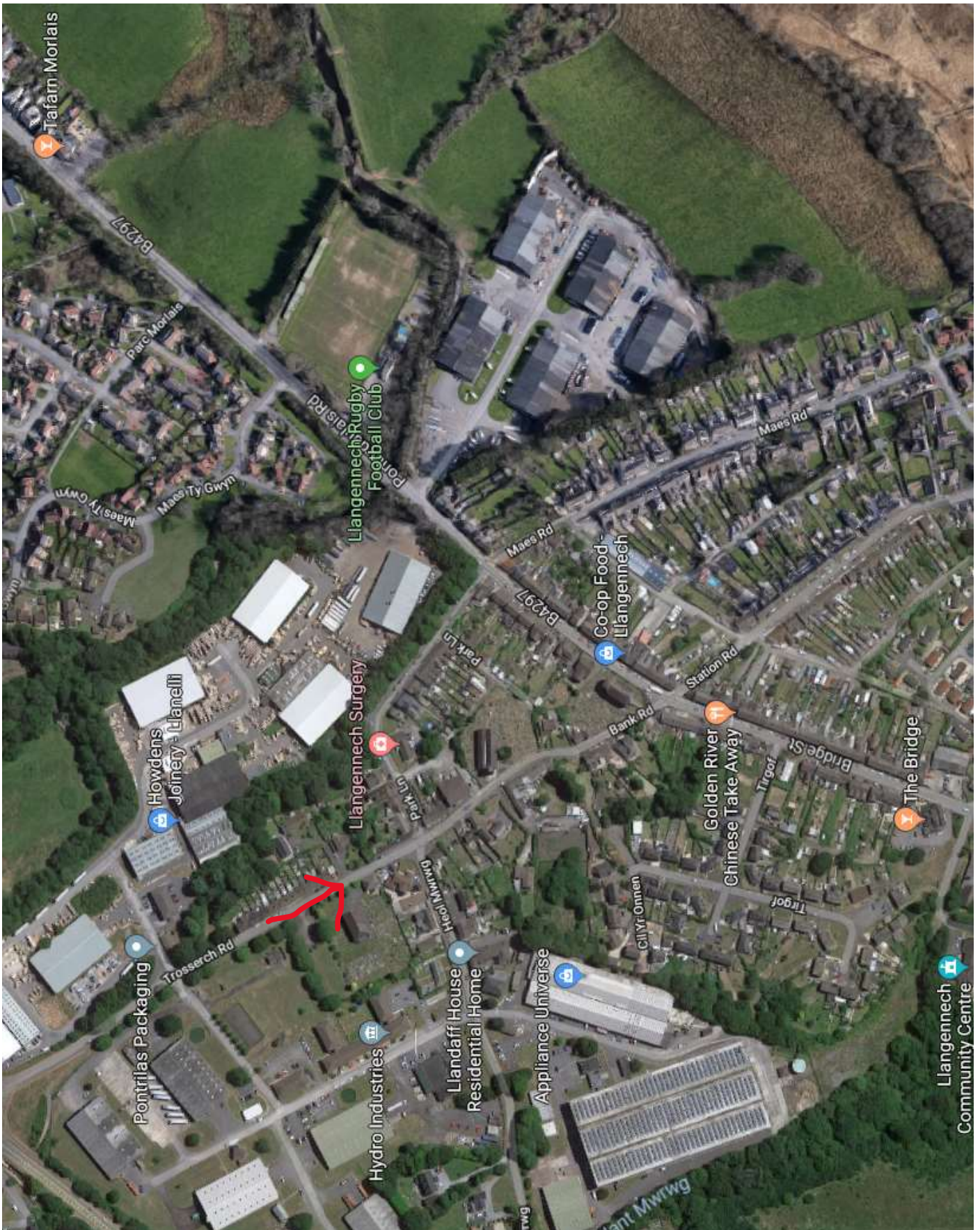


Below is a map to Llangennech village, here you will find a co-op. –
Bridge street is the main road through the Village.



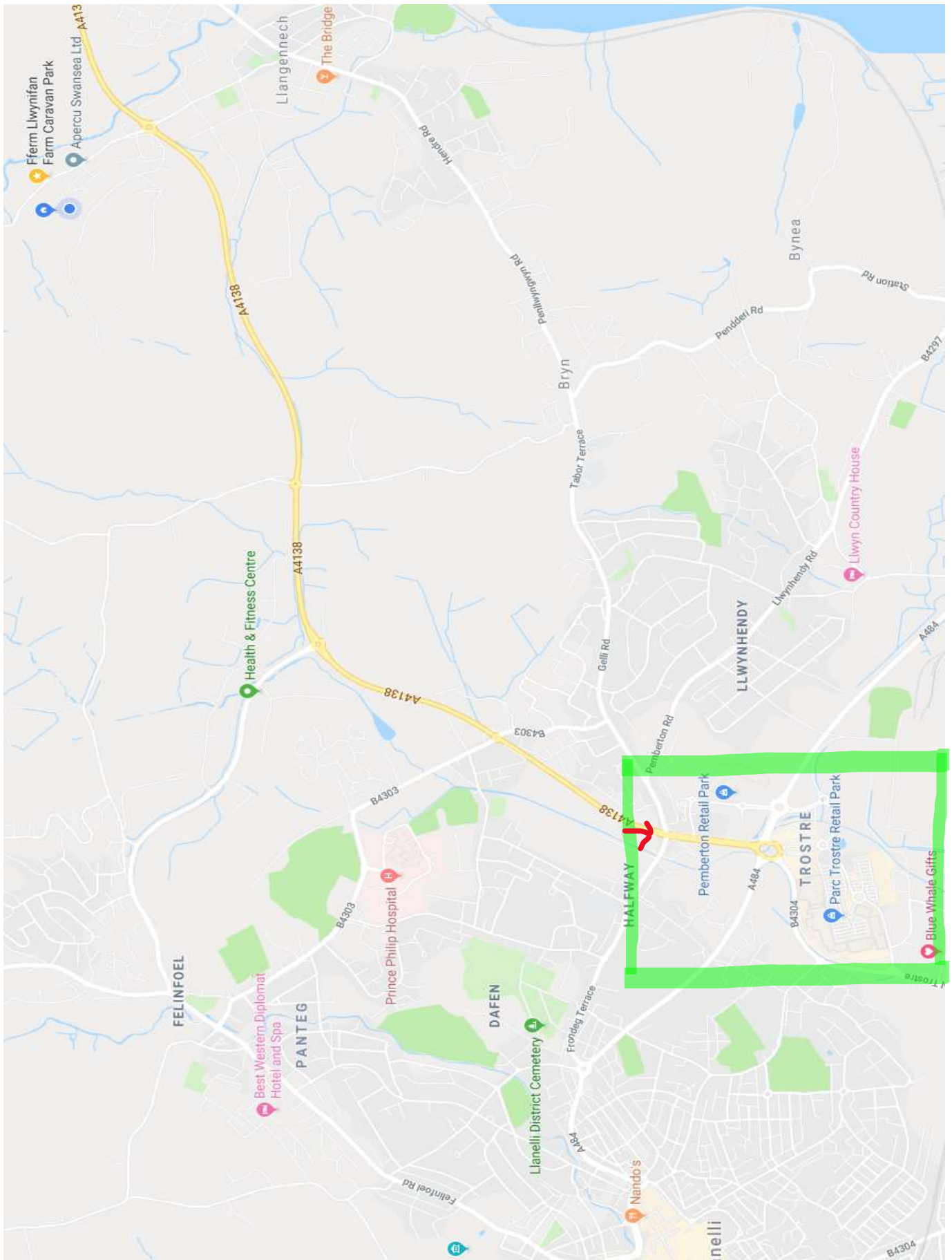


The green box on the previous page is the area below.





Below is a map to Pemberton Park and Parc Trostre Retail park.





The green box on the previous page is the area below.





Your electricity supply is 10amps
Here is a useful conversion chart.

WATTS TO AMPS CONVERSION	
60 Watts	= 0.26 Amp
100 Watts	= 0.43 Amp
200 Watts	= 0.87 Amp
300 Watts	= 1.30 Amp
400 Watts	= 1.74 Amp
500 Watts	= 2.17 Amp
600 Watts	= 2.61 Amp
700 Watts	= 3.04 Amp
800 Watts	= 3.48 Amp
900 Watts	= 3.91 Amp
1000 Watts	= 4.35 Amp
1200 Watts	= 5.22 Amp
1300 Watts	= 5.65 Amp
1400 Watts	= 6.09 Amp
1500 Watts	= 6.52 Amp
1600 Watts	= 6.96 Amp
1700 Watts	= 7.39 Amp
1800 Watts	= 7.83 Amp
1900 Watts	= 8.26 Amp
2000 Watts	= 8.70 Amp

If your electricity turns off, you may re set the switch.

Push the switch all the way down (if it is only halfway) then push it back up.

Electricity usage & Awning heaters. The pitch supply is 10amp. We do not charge for awnings, however If you wish to use an electric heater in the awning, please let us know, there is an additional £5 per night fee. Please ensure you also have the correct fire precautions in place. See our T&Cs



Motorhome “friendly” parking in Carmarthenshire

Car Parks without entry or height restrictions include:

- Llandovery Castle Car Park
- Laugharne Grist Car Park
- St Clears Car Park
- Ammanford Car Park
- Llandeilo Car Park
- Newcastle Emlyn Car Park
- John Street Car Park Carmarthen
- Railway Station Car Park Carmarthen
- Towyside/Riverside Car Park Carmarthen
- Carmarthen Park and Ride Car Park at Nant y Ci
- Llansteffan Car Park
- Kidwelly Car Park
- Pembrey Car Park (on left before entrance to Pembrey Country Park)
- Burry Port Harbour Car Park
- Llanelli North Dock Car Park
- Llanelli Town Eastgate Car Park
- Festival Fields Car Park Llanelli
- Pwll Pavilion Car Park
- Sugar Loaf Car Park (near Llandovery)
- Brechfa Forest Car Park
- Green Castle Woods Car Park (near Llansteffan)
- National Botanic Garden of Wales Car park



If the motorhomes take up more than one space, then it’s a good idea to purchase 2 tickets. Important to check any car park weight restrictions. Overnight stays are not permitted.

(*Information provided by Carmarthenshire County Council Tourism Department in January 2019)

Motor home Friendly car parks website.

www.park-my-motorhome.co.uk/markdown-3/carmarthen/



Suggested dog walk (Roughly 45min)

- Go down our lane and turn left
- Carry on up the lane until the houses finish. You will pass a bench on your right hand side, and the entrance to the farm next door on your left.
- After you pass these, turn next right down a lane
- If you cross the river turn right (There is a bridge) and walk back down through the fields.
- Another option is before the bridge turn left; this will take you into Troserch Community woodland. (We have maps for this area)
- You will cross the river again just before the main road



For more dog friendly attractions and location make sure your human looks at

www.discovercarmarthenshire.com/explore/dog-friendly/



Countryside Code of conduct.

- Fasten all gates & Take your litter home
- Keep dogs under close control & Take care on country lanes
- Keep to public paths across farmland
- Use gates and stiles to cross fences, hedges and walls
- Leave livestock, crops and machinery alone

Dog Terms and Conditions

Dogs & Humans please read!

- Dear dog, this is an adult only park, you must therefore behave for your humans and keep yourself under control.
 - We know you want to run around and see everything, but not everyone loves you like your humans, you must therefore stay on your lead at all times whilst around the humans van, and whilst on the park.
 - Some other doggies are friendly; HOWEVER, some other dogs are not so friendly! So, stay on your lead and do not escape! When you go into the doggie field, and get a chance to be off your lead, make sure your human checks if there are dogs in there already, and check if they friendly or not!
 - If you make a poop make sure you tell your human, as they need to collect it and place it in the yellow bin.
 - Make sure your human doesn't wash your blankets etc in the washing machine or dry them in the tumble dryer. These are for human clothes only.
 - Make sure your human takes you on the walk as described on this sheet, you will love it, and there are lots and lots of trees to look at.
- Enjoy your stay, and remember you are not to chase after sheep or cats!

Dog exercise area.



The exercise area is in the field, on the left as you come up our drive. The gate to enter is behind the shower and toilet block. Please make sure that your humans clean up after you. We do all that we can to secure the field, however if you see an escape route, tell your humans, and they will tell Hywel who will happily close it up



Dog Friendly Pubs & Cafés in Carmarthenshire



We are constantly updating this lists – and the most up to date list can be found on our website <https://southwalescaravansite.co.uk/wp-content/uploads/2019/05/Dog-friendly-pubs.pdf>

The nearest pubs to us that allows dogs inside are

The Pembrey County Inn - 30 Randell Square, Pembrey, Llanelli,
Carmarthenshire, SA16 0UA www.thepembreycountryinn.co.uk
01554 834530

Or

Stradey arms Furnace (Bar area) 1 Stradey Rd, Llanelli SA15 4ET
<https://www.bwydorgalon.co.uk/> 01554 753332

Other pubs in Carmarthenshire include....

Browns Hotel - Laugharne SA33 4RY.

browns-hotel.co.uk 01994 427688

Castle Hotel - Llandovery SA20 0AP.

castle-hotel-llandovery.co.uk 01550 720343

Cennen Arms - (Bar and Special Back-room) Trap, Llandeilo SA19 6TP.
01558 822330

Kings Head - 1 Market Square, Llandovery SA20 0AB.

kingsheadllandovery.co.uk 01550 720393

New Three Mariners Inn - (Both bar and rooms) Laugharne SA33 4SA.

newthreemarinersinn.co.uk 01994 427426

Plough Rhosmaen Hotel & Restaurant - (Reception, rooms & garden) Rhosmaen, Llandeilo SA19 6NP.

ploughrhosmaen.com 01558 823431

Springwell Inn - (Bar and decking) Pendine SA33 4PA.
01994 453274

The Angel - (Bar) Llandeilo SA19 6EN.

angelbistro.co.uk 01558 82276



The Black Lion - Abergorlech Road SA32 7SN.

blion.co.uk 01558 685271

The Black Lion - Pentre Road, St Clears SA33 4AA.

01994 231700

The Bunch of Grapes - Bridge Street, Newcastle Emlyn SA38 9DU.

01239 711185

The Corvus Inn - (Bar) Station Rd, St Clears SA33 4BG.

corvusinn.co.uk 01994 230601

The Cross Inn - Laugharne SA33 4QS.

The Forest Arms - Brechfa SA32 7RA.

01267 202288

The Ivy Bush - Emlyn Square, Newcastle Emlyn SA38 9BG.

01239 710542

The Plash - Whitland SA34 0UN.

theplashinn.co.uk 01437 563472

The Plough and Harrow - (Bar and Beer Garden) Trevaughan, Carmarthen SA33 6AA.

01267 221783

The Queens Hotel - (Bar only) Carmarthen SA31 1JR.

01267 231800

The Royal Oak Inn - (Bar and Patio) Rhandirmwyn, Llandovery SA20 0NY.

theroyaloakinn.co.uk 01550 760201

The Sidan Licensed Lounge & Ice Cream Parlour - Pembrey Country Park, Pembrey SA16 0EJ.

facebook.com/TheSidan 01554 832034

The Talardd Arms - Llanllwni SA39 9DX.

talardd.com 01559 395633

The White Hart Inn - (Bar) 36 Carmarthen Road, Llandeilo SA19 6RS.

whitehartinnwales.co.uk 01558 823419

Three Rivers Hotel & Spa - Ferryside, Carmarthen SA17 5TU.


threerivershotel.co.uk 01267 267270

If you find other dog friendly pubs please let us know, and we will update this list.



Fferm Llwynifan Farm Terms and Conditions– Also available on our website

Davies and Jones family wish to extend a warm and friendly welcome to all visitors who are staying on our small quiet family run park. We want everyone to enjoy the peace and tranquility of the countryside, we would appreciate your co-operation on the following items.

- * **Please note we are an adult only park.** We do have small children in the family, so they may occasionally be seen walking round the park with ourselves. (18yrs + Only)
 - * **Cancellation Policy** – 50% nonrefundable or transferable deposits is required to reserve your pitch.
 - * **Minimum Stay policy, booking period** – At Llwynifan Farm there is a minimum booking period of 3 nights for Bank Holiday weekends and 3 nights for weekends in July and August.
 - * **The balance** of your account needs to be paid before 6pm on your arrival day.
 - * **Price Changes:** We reserve the right to alter prices at any time without further notice due to circumstances beyond our control
 - * **Arrival and Departure Times** – Our standard arrival time is between 2pm and 6pm and departures are by 12 noon. We are happy where possible to accommodate early arrivals and late departures BY PRIOR ARRANGEMENT so that we can confirm the pitch will be ready for you.
 - * **Mobile text message.** By supplying us with a mobile number, we may text you when your pitch becomes available. We do not use your number for any other purpose or sell your mobile number to any company.
 - * **BBQs** are permitted but please ensure you take sensible precautions and DO NOT put disposable BBQs on the grass, or on our picnic benches.
 - * **Ground Sheets** We keep the grass short always, grass that has died off due to ground sheets/awnings is unsightly and unfair for the people that follow on to use that pitch, therefore awnings MUST be placed on the hard standing. Please bring pegs that are suitable for a hard-standing area.
 - * **Visitors.** Your family or friends are welcomed to visit you whilst on park, please let one of us know that you are expecting visitors. *NOTE WE ARE AN ADULTS ONLY PARK. NO CHILDREN UNDER 18 ARE PERMITTED ON SITE.
 - * **Liability:** we shall not be liable for any loss that you may suffer because of any act or omission by any person who is not employed by us. We shall not be liable to you for any consequential or indirect loss that you suffer whether this loss arises from breach of duty in contract or tort or any other way. Except in the case of personal injury or death, our total liability to you in respect of all claims arising out of your stay shall not exceed the cost of your booking. We accept no responsibility whatsoever for your personal belongings whilst they are on the park.
 - * Ball Games are not permitted anywhere near the vans.
 - * **Dogs** Maximum of two dogs per pitch. (More than two dogs by agreement only) Dogs must always be kept under control and on a short lead. Dogs are not permitted in the toilet and shower block.
- 
- 
- Owners are required to clean up after their dogs, any guests seen to be allowing their dogs to foul on the site without cleaning it up will be asked to leave and their booking terminated without refund.
- Dogs must not be left unattended in a caravan or awning whilst on the park at any time.
- We reserve the right to request that the owner remove their dog, or any other pet, from the park if it is a nuisance or danger to other guests.
- * **Recycling.** Help to be environmentally friendly and recycle your glass, paper and tins by placing it in the bins provided. (Please wash these out where possible)
 - * **Noise.** Keep all noise to a minimum especially after 10.00 pm.
 - * **Water usage.** We are on a meter, therefore request if your connection to the water services is leaking, please turn it off when not in use.
 - * The washing of Caravans and cars whilst on a pitch, is not permitted, as this is unfair on future occupants of that pitch.
 - * **Electricity** is 10amp supply, we do not allow heaters to be left on in unused awnings. There is an additional £5pn charge if you wish to use an electric heater in the awning. Failure to disclose a use of a heater in your awning, will result in the immediate termination of your booking, and you will be asked to leave – no refund will be given.
 - * The site has a wide selection of wildflowers, please do not damage, dig or pick them up.



- * We do accept vans longer than 8m (26ft) however please take care when entering the farm road.
- * **Respect other peoples privacy.** You must comply with decent standards of behavior during your stay and must show consideration for all other guests on the park. Otherwise we may elect to terminate this agreement and require you to leave the park immediately. In these circumstances, you will not be entitled to any refund.
- * **Specific pitch reservation.** If you request a specific pitch, we will do our best to ensure this is available for you. However, we reserve the right to move you to another pitch in order to accommodate further bookings if needed.
- * **Pitches 6, 7, 8 and 9** Please be mindful of guests in the pitches behind you, especially when putting up gazebos and towel rails.
- * Leave your pitch and all facilities clean & tidy as you would wish to find them.
- * **Laundry facilities** are for patrons of Llwynifan Farm Caravan park only. No dog bedding or shoes are to be washed or dried in the machines
- * **Entry.** We reserve the right to refuse entry to any guest, this is at the discretion of the owners of Llwynifan Farm. in such cases, all booking monies will be refunded in full and the agreement ended.
- * **Commercial Vehicles** – No commercial vehicles are permitted.
- * **Links to third-party sites** – This website does contain hyperlinks to websites operated to parties other than Llwynifan Farm. Such hyperlinks are provided for your reference only. Llwynifan Farm does not control such websites and is not responsible for their content or your use of them. Llwynifan Farm inclusion of hyperlinks to such websites does not imply any endorsement of the material on such websites or any association with their operators.
- * **E-mail** – By contacting us or supplying us with your e-mail address, you agree to be added to our database. We only send out one or two e-mails each month, full of useful information on South Wales and the park. You may safely un-subscribe from these at any time.

Data protection Act 1984

Under the terms of the act we must advise you that your details are kept on a computer database. Its purpose is solely to initiate contact with you. Under no circumstances are the details used for any other purpose or made available to a third party.

* **CCTV** – Llwynifan Farm uses closed circuit television (CCTV) images to provide a safe and secure environment for family and visitors to our premises, such as guests, clients, customers, contractors and suppliers, and to protect the parks property.

The purposes of our CCTV systems include:

- To assist in the prevention or detection of crime or equivalent malpractice.
- To assist in the identification and prosecution of offenders.
- To monitor the security of the parks business premises.
- To ensure that health and safety rules and parks procedures are being complied with.
- To easily find out if a pitch has become vacant.

To view our full CCTV policy, visit our website, or as Hywel / Cathrin for details.

* These Terms and conditions are subject to change at any time. It is the users own responsibility to check for any changes.

* If you do NOT agree with the terms and conditions, we advise you to contact us to discuss alternatives

* **Wi-Fi Terms and Conditions**, you will be asked to sign a copy of the agreement in order to have access to this service. A copy of the T&Cs is included in this welcome pack.

- **If there is anything not up to standard please let us know during your stay and before you leave, we will do whatever we can to rectify the issue.**